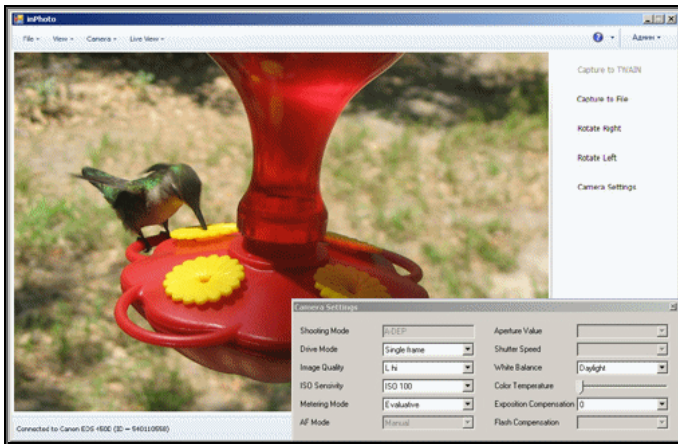


inPhoto Capture SLR

Canon SLR camera control

inPhoto Capture SLR is designed for full control of Canon SLR cameras. **inPhoto Capture SLR** works as TWAIN driver and as stand alone application. It supports all TWAIN compatible software products including all standard ID card solutions (ID Works, EPISuite, Asure ID, ID Flow, etc.).



inPhoto Capture SLR features:

- **Full control of all camera settings** from computer.
- **Live image preview.**
- **Image rotation:** manual by 90 and 180 degrees.
- **Auto face find, crop, resizing, and enhancement**
- **Save images** to the specified folder.
- **Image export** to the applications supporting TWAIN.
- Ability to work as **TWAIN driver** and as **stand alone** application.

Supported Canon SLR cameras:

Canon EOS 1D Mark III, Canon EOS 40D, Canon EOS 1Ds Mark III, Canon EOS 450D / Canon EOS DIGITAL REBEL Xsi, Canon EOS 1000D / Canon EOS DIGITAL REBEL XS, Canon EOS 1100D / Canon EOS DIGITAL REBEL T3, Canon EOS 50D, Canon EOS 5D Mark II, Canon EOS 500D / Canon EOS REBEL T1i, Canon EOS 550D / Canon EOS REBEL T2i, Canon EOS 7D, Canon EOS 1D Mark IV, Canon EOS 60D, Canon EOS 600D / Canon EOS DIGITAL REBEL T3i, Canon EOS 5D Mark III, Canon EOS 1D X, Canon EOS 650D / Canon EOS DIGITAL REBEL T4i

Possible applications of inPhoto Capture SLR:

- ID photo for ID cards, passes, and badges,
- Using Canon SLR camera on the microscope or copy stand,
- Subject photography: jewel photo, etc.,
- Document and book photography, and other.



email: info@akond.net
<http://www.akond.net>
Tel: +7-921-7578319,
Tel. / fax: +7-812-3846430