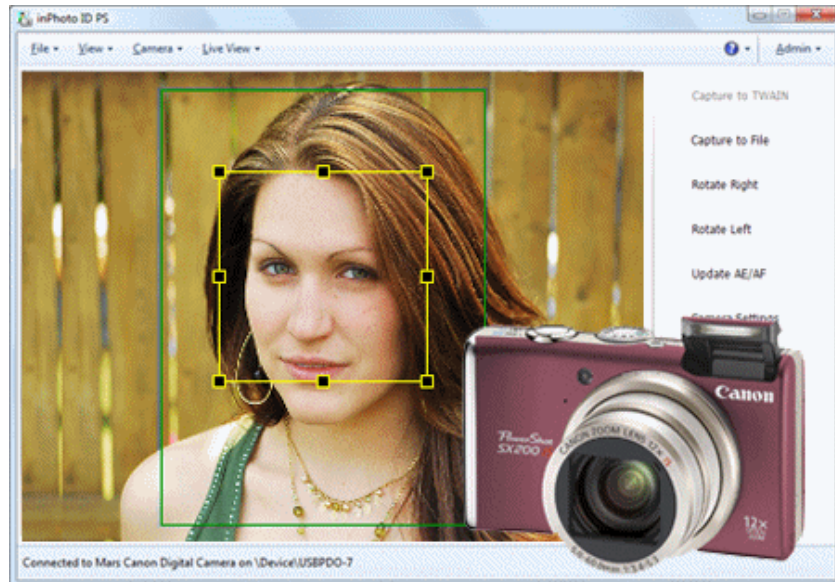


inPhoto ID PS / inPhoto Capture PS



**Automatic ID photography
With Canon Powershot camera**

Start up Guide



2011

Akond company
Russia, St.-Petersburg,
Serdobolskaya, 65a
Phone/fax: +7(812)600-6918
Cell: +7(921)757-8319
e-mail: info@akond.net
<http://www.akond.net>

inPhoto ID PS / inPhoto Capture PS Start up Guide © 2011 A.V. Povarkova

Information in this document is subject to change without notice.

This document is a property of A.V. Povarkova. It may be copied or transmitted to a third party only in its complete form with no omissions; all trade marks and copyrights be preserved. Any changes or amendments shall be agreed upon in writing with A.V. Povarkova.

Content

Items required _____	4
How to find Canon camera firmware version _____	6
How to install inPhoto ID PS / inPhoto Capture PS _____ _____	10
About company _____	11
Appendix 1 _____	13

1. ITEMS REQUIRED

In order to be able to install and use **inPhoto ID PS / inPhoto Capture PS** make sure that you have the following items:

1. Compatible **Canon Powershot camera (November 2011 status):**

- **Canon A480,**
- **Canon A495,**
- **Canon SX200 IS,**
- **Canon SX210 IS,**
- **Canon SX130 IS,**
- **Canon A800,**
- **Canon A2200,**
- **Canon SX150 IS**

Important!

Canon Powershot cameras may have different firmware (built-in OS) versions. Supported firmware versions are listed below.

Camera Model	Firmware Version
Canon PowerShot A480	100B
Canon PowerShot A495	100F
Canon PowerShot SX130 IS	101C, 101D, 101F
Canon PowerShot SX200 IS	100C, 100D
Canon PowerShot SX210 IS	100C
Canon A800	100A, 100C
Canon A2200	100D
Canon SX150 IS	100A

Read about how to learn the camera firmware version in the corresponding chapter (**Chapter 2**).



2. 2GB SD memory card (minimum 64MB). You can use for example **SanDisk Standard 2GB Secure Digital Card** or any other SD memory card available in all photo shops. The SD cards with the memory size greater than 4Gb **shall not be used**.



3. Personal computer

System requirements:

- Windows XP SP3, Windows Vista, Windows 7 (including 64bit),
- Free 20MB on hard disk for the software files,
- Microsoft .NET Framework 3.5 Service Pack 1,
- One free USB 1.0 (or higher) port to connect Canon camera to PC,
- It is necessary to have the card reader connected to PC (or built-in).



4. Card reader connected to PC (or built-in). One of the recommended card readers is **SanDisk ImageMate Multi-Card USB 2.0 Reader/Writer (SDDR-199-A20)**. The card reader will be used to program the camera SD card.



2. HOW TO KNOW CANON CAMERA FIRMWARE VERSION

Method 1. By the captured image.

The camera firmware version can be determined by the EXIF tag data in the captured JPG file. There are two options:

- Capture image to JPG file with your camera and email the image file to us for analysis (email info@akond.net),

- Use our **Card Preparation Utility** to analyze the captured JPG file yourself. The **Card Preparation Utility** can be downloaded from <http://www.marssystem.com/downloads.html>

Insert SD memory card with the captured JPG file into the card reader. Run Card Preparation Utility and follow all wizard instructions you will get. The utility will determine the camera firmware version and inform you if your camera is compatible with **inPhoto ID PS / inPhoto Capture PS** or not (see Figure 1).

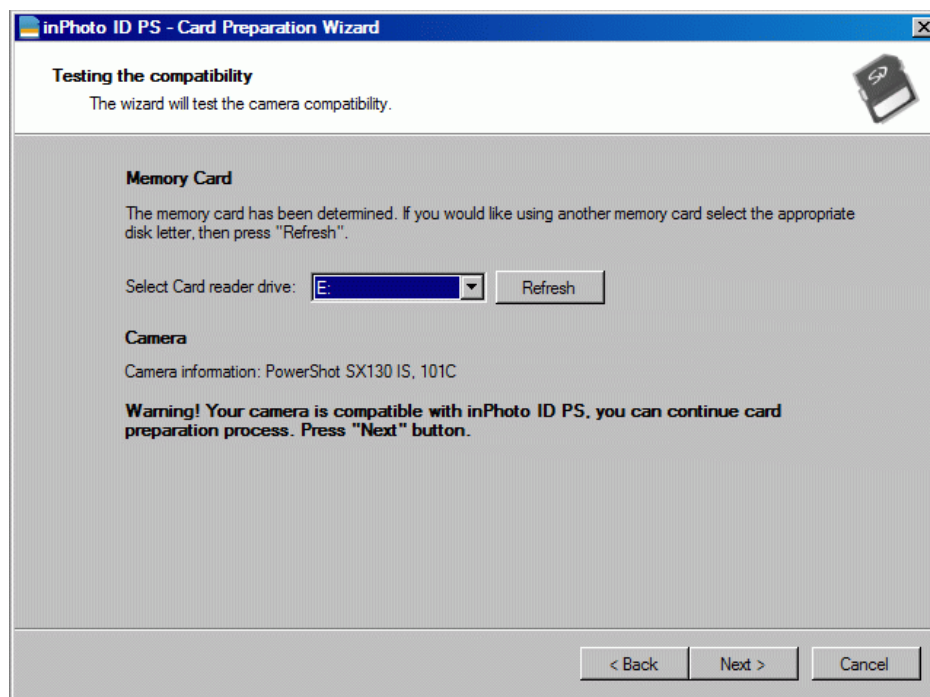


Figure 1. Testing the camera compatibility.

Method 2. By the camera serial number

Use this method if you are not able to preliminary capture the image with the camera.

In such a case you can use the camera serial number printed on the camera and on the camera box. This method does not provide 100% accuracy in definition of the camera firmware version but still have a very high probability.

In order to define if **Canon Powershot camera** firmware is compatible with **inPhoto ID PS / inPhoto Capture PS** you can use the camera serial number printed on the camera box.

For the cameras manufactured **before 2010** the serial number consists of 10 digits:

1 2 3 4 5 6 7 8 9 0
A B C D E E E E E

For cameras manufactured **after 2010** the serial number consists of 12 digits:

1 2 3 4 5 6 7 8 9 0 1 2
A A B C C D E E E E E E

The camera serial number is printed on the special sticker on the camera bottom:



It is also printed on the camera box, on the sticker with the bar code, below the bar code:



How to read the serial number		
	Description	Format
AA	Supposedly, manufacturer ID	From 01 to 09
B	Region code	2 – USA, 3 – Russia and so on
CC	Supposedly, lot number	Equal to 01, 02, 03, 05, 06, 09, or 26
D	Firmware versin	Equal to 0, 1, 2, sometimes 3. For G and S cameras may be higher.
EEEEEE	Camera number for the certain firmware version	Starts from 000001 for each firmware version

Canon Powershot camera firmware compatible with inPhoto ID PS / inPhoto Capture PS

Canon PowerShot A480

Firmware version: xxxx2xxxxx

Camera number: starting from xxxx05000

Canon PowerShot SX200IS

Firmware version: xxxx0xxxxx

Camera number: starting from xxxx04000

Canon PowerShot SX210IS

Firmware version: xxxxx0xxxxxx

Camera number: starting from xxxxxx020000

Canon PowerShot A495

Firmware version: xxxxx2xxxxxx
Camera number: starting from xxxxxx005000
Firmware version: xxxxx0xxxxxx, xxxxx1xxxxxx – not compatible and NOT UPGRADABLE

Canon PowerShot SX130IS

Firmware version: xxxxx2xxxxxx, xxxxx3xxxxxx, xxxxx4xxxxxx
Camera number: starting from xxxxxx002000
Firmware version: xxxxx0xxxxxx, xxxxx1xxxxxx – not compatible but UPGRADABLE The upgrade link is
<http://web.canon.jp/imaging/dcp/firm-e/pssx130is/index.html>

Canon PowerShot A800

Firmware version: xxxxx0xxxxxx, xxxxx1xxxxxx
Camera number: starting from xxxxxx006500

Canon PowerShot A2200

Firmware version: xxxxx3xxxxxx
Camera number: starting from xxxxxx002700

Canon PowerShot SX150 IS

Firmware version: xxxxx0xxxxxx
Camera number: starting from xxxxxx000300

3. HOW TO INSTALL INPHOTO ID PS / INPHOTO CAPTURE PS

To install and run **inPhoto ID PS / inPhoto Capture PS** the following simple operations shall be performed.

inPhoto ID PS / inPhoto Capture PS version 3**1. DOWNLOAD inPhoto ID PS / inPhoto Capture PS.****inPhoto ID PS / inPhoto Capture PS version 3:**

<http://www.marssystem.com/download/inphotoidps/inphotoidps312.exe>

Or contact info@akond.net to receive the download link.

2. Start inPhoto ID PS / inPhoto Capture PS installation and follow all Wizard instructions step by step. In the process of software installation you will be ask to program the SD memory card.

Warning!

It is strongly recommended to program one SD memory card per camera. In the future you will be able to program additional SD memory card for this camera if you know the camera model and its firmware version.

3. Run inPhoto ID PS / inPhoto Capture PS.

inPhoto ID PS / inPhoto Capture PS version 2 (old)

1. **DOWNLOAD** inPhoto ID PS / inPhoto Capture PS and Card Preparation Utility for inPhoto ID PS / inPhoto Capture PS.

inPhoto ID PS / inPhoto Capture PS version 2:

<http://www.marssystem.com/download/inphotoidps/inphotoidps281.exe>

Card Preparation Utility:

<http://www.marssystem.com/download/inphotoidps/cardsetup.exe>

Or contact info@akond.net to receive the download links.

2. Install **SD memory card** to the card reader connected to PC (or built-in), run **Card Preparation Utility** and follow all its instructions. Please read them carefully and do not miss any steps. The Card preparation Utility will program the SD memory card.

Warning!

It is strongly recommended to program one SD memory card per camera. In the future you will be able to program additional SD memory card for this camera if you know the camera model and its firmware version.

Important!

Read Appendix#1 for more details on Card Preparation procedure.

3. Install inPhoto ID PS / inPhoto Capture PS.

inPhoto ID PS / inPhoto Capture PS start up

Now you can run **inPhoto ID PS / inPhoto Capture PS** software as TWAIN source from all TWAIN compatible applications.

- If you work with Incardex (ID card software) click on the photo with the right mouse button, select **inPhoto ID PS / inPhoto Capture PS** driver in a list, then double click on the photo field, and **inPhoto ID PS / inPhoto Capture PS** will be started.
- If you work in Adobe Photoshop go to File / Import / inPhoto ID PS / inPhoto Capture PS.
- If you work in Jasc Paint Shop Pro go to File / Import / TWAIN / Select Source, and select inPhoto ID PS / inPhoto Capture PS. After the source is selected use Acquire command (File / Import / TWAIN / Acquire).
- If you work in other third party applications supporting TWAIN please refer to the corresponding documentation supplied with your graphic software.

You can also run **inPhoto ID PS / inPhoto Capture PS** as stand alone software (Start – All programs – **inPhoto ID PS / inPhoto Capture PS**).

After **inPhoto ID PS / inPhoto Capture PS** is started up you will get the live image in the image preview window.

Please read **inPhoto ID PS / inPhoto Capture PS User Guide** on how to use **inPhoto ID PS / inPhoto Capture PS** software.

4. ABOUT COMPANY

We hope that you install **inPhoto ID PS / inPhoto Capture PS** software and learn how to use it with no problems, and that your work will be more effective and comfortable than before.

Other software products offered by our company:

ID Photo Software

- inPhoto ID SLR
- inPhoto ID Webcam
- ID Photo Processor

Camera control software

- inPhoto Capture SLR
-

ID card software

- Incardex

Discontinued

- inPhoto ID
- inPhoto Capture

Information on all above products can be found on www.akond.net.

Please feel free to contact us

- If you have any problems or questions concerning **inPhoto ID PS / inPhoto Capture PS** operation,
- If you have any comments on **inPhoto ID PS / inPhoto Capture PS** operation,
- If you need any help on selection of software and hardware for your application.

We will be happy to help you.

Akond company

Russia, St.-Petersburg,
Phone/fax: +7 (812) 600-6918

Cell: +7 (921) 757-8319

e-mail: info@akond.net

<http://www.akond.net>

APPENDIX #1

When you run Card Preparation Utility the **Card Preparation Wizard** will guide you through the SD memory card preparation procedure.

Below you will find all **Card Preparation Wizard** recommendations. Please follow them, and the SD memory card will be prepared as it is required.

1. Start page

Welcome to the card preparation wizard.

This wizard will help you preparing a card for inPhoto ID PS / inPhoto Capture PS application.

Welcome to the card preparation wizard for inPhoto ID PS / inPhoto Capture PS.

This wizard allows preparing Secure Digital (SD) memory cards for using in Canon PowerShot digital camera. When using prepared cards camera has the ability to be controlled from the computer using the inPhoto ID PS / inPhoto Capture PS application.

Before running the wizard please prepare SD memory card which is compatible with your digital camera and has enough storage capacity. The card should not be set to read-only (locked) state. Also, the camera should be equipped with batteries, and should not be connected to the computer. The computer should be equipped with an SD memory card reader.

Warning! To prepare the card you will need a card reader. When a card is being prepared it requires direct recording, so a preparation of card inserted into camera is impossible.

Do not insert the card into card reader before the wizard asks to do it. Press "Next" after everything is ready to proceed.

2. Make a shot, then insert the card into the reader

Preparing for the compatibility test.

Please prepare to run the compatibility test for your digital camera.

Make a single shot on the card

Insert the memory card into the camera. Turn the camera on and make a single shot in any shooting mode.

Insert the card into card reader.

Remove the card from the camera. Insert the card into the reader. Then click "Next".

Testing the camera compatibility

The wizard will search for the card and the picture. Then it will test the compatibility of your camera with the inPhoto ID PS / inPhoto Capture PS.

3. Determining the model and revision, checking the card.

Testing the compatibility

The wizard will test the camera compatibility.

Memory card

The memory card has been determined (has not been determined). If you would like using another memory card (insert a memory card and) select the appropriate disk letter, then press "Refresh".

Camera

Camera information

Your camera is compatible with the inPhoto ID PS / inPhoto Capture PS. You may continue preparing the card. Please press "Next".

Warning! Your camera is not compatible with the inPhoto ID PS / inPhoto Capture PS or the card model cannot be determined. It is not recommended to continue preparing the card. Using the prepared card with an incompatible camera model may cause problems. Camera control from the computer is possible only for compatible card models.

Warning! You card has too small storage capacity. Shooting may not be possible. It is not recommended to continue preparing the card. Please use memory cards with larger storage capacity.

4. Ready to start

Preparation for writing is completed.
Everything is ready to start writing the card.

Ready to start writing the card

Everything is ready to start writing the memory card. The card will be formatted in the special way. All information stored on the card will be erased. After that the required program files will be copied to the card. To start writing please press "Next".

Wait until writing is completed

Please do not stop the writing process and wait until it is completed. Do not remove the card, close this wizard, or turn the card reader off.

Warning! There are some files detected on the card. Please note that all the information stored on the card will be lost.

5. Running the preparation process and check

The writing is in progress
Please wait until the writing process is completed.

- Card formatting
- Setting 'bootable' attribute
- Copying the files
- Finalizing

6. A. Setting the read-only mode for the automatic card start

Writing is finished successfully.
Please set the read-only mode on memory card.

Writing is completed.

The card writing was finished successfully. Please continue the card preparation.

Set the read-only mode on memory card.

For the automatic run of the program stored on card it is required to turn the card into read-only mode. When this mode is turned on the program starts automatically. Remove the card from the reader and set the switch into read-only position (lock). Press "Next".



Warning! If the read-only mode is turned off, the program will not run automatically, and the camera control from computer will be impossible.

6. Б. Error

Writing was finished with error.
The error occurred while writing the card.

Writing is not completed

The error occurred while writing the card. Preparation cannot be proceeded. Please retry the card preparation process.

7. Verify if the card is working successfully

Card verification
Check the card working with camera

The card is ready

The card is ready. Please check whether the memory card is working correctly with the camera.

Check the card working with camera

Insert the card into the camera. Do not turn off the read-only mode of the card. Switch the camera power on. The camera should start in Play mode. After power is on the following image should appear:



The bottom part of this image will be covered with version number. If you see this image on camera display, the card preparation process has been completed successfully. Your camera now can be controlled from a computer. Please do not remove the memory card from camera while working with inPhoto ID PS / inPhoto Capture PS.

Troubleshooting

If you do not see the image on the camera display, it probably means that one of the wizard steps has been passed incorrectly. Please retry the card preparation process.

8. Next card preparation

Work completion

The card preparation is completed.

The work of the wizard is completed. You may start preparing another card or close the wizard.

Close the wizard

Prepare another card.